

SCRIPT  PEOPLE



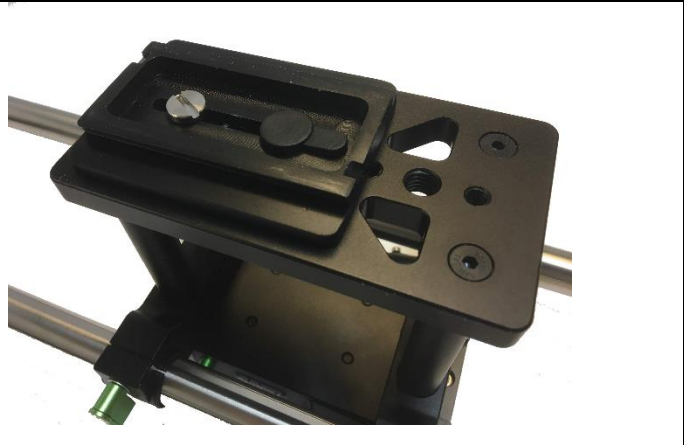
## Script People SP150 Setup Guide

[scriptpeople.com](http://scriptpeople.com)

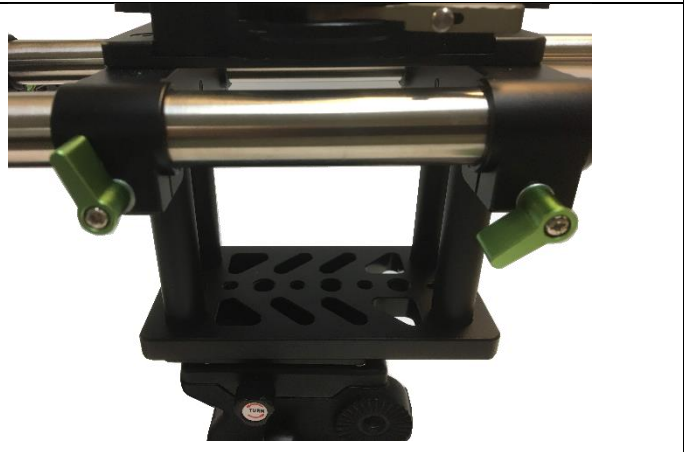
## PART LIST

<p>Adjustable Camera Riser with quick release plate</p>	 A black adjustable camera riser with a quick release plate. The riser has a central vertical post and two side posts, with a black plate attached to the top. The quick release plate is shown separately below the riser.
<p>Silver Mounting Rods (2)</p>	 Two long, thin, silver-colored metal rods, one slightly longer than the other, lying parallel to each other.
<p>Monitor and mounting bracket</p>	 A black monitor with a mounting bracket attached to the top. The monitor is shown from a slightly elevated angle, and the bracket has two horizontal arms extending from the top edge.
<p>Hood frame, black hood rods (2) and shroud</p>	 A black hood frame with a central opening. Two black hood rods are attached to the top corners of the frame. A black shroud is also visible, partially covering the frame.
<p>Tri-fold hood</p>	 A black tri-fold hood, which is a pyramid-shaped structure with three visible faces. It is shown from a perspective view.
<p>Beamsplitter</p>	 A rectangular, grey, semi-transparent beamsplitter. It is shown from a perspective view, appearing as a flat, rectangular plate.
<p>Counterweight</p>	 A counterweight consisting of a circular metal disc with a black frame. The frame has two loops on the top and a small green component on the right side. The disc is shown from a perspective view.

1. Attach the wedge plate from your tripod head to the bottom of the provided camera riser.



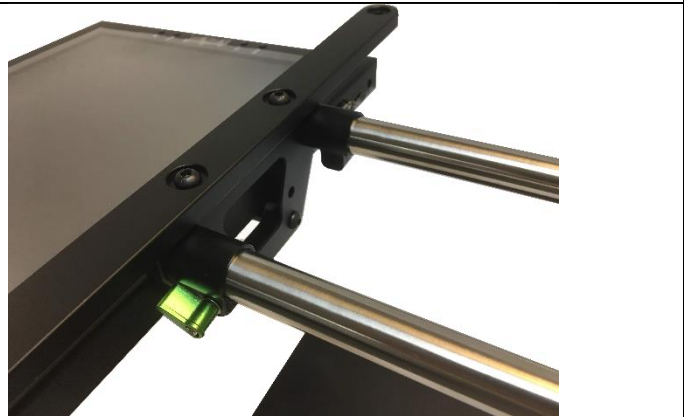
2. Slide the silver rods through the mounting holes on the camera riser. Use the green tabs to open the mounting holes if sliding the rods through is difficult. Tighten the tabs once your rods are inserted.



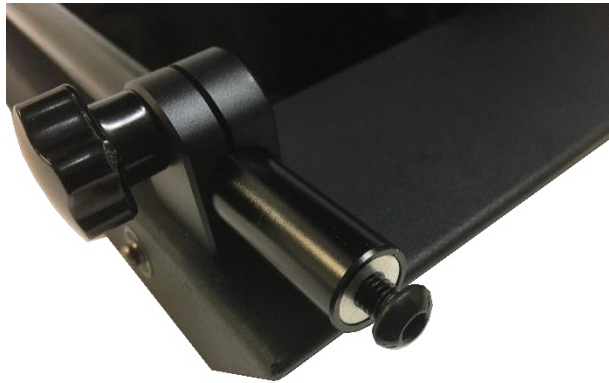
Note: Be sure the distance each rod is inserted into the mounting holes are similar.



3. Slide your monitor onto the end of the silver mounting rods.



**4. Connect the black hood rods to the monitor bracket. It may be easier to remove the rods from the hood frame first.**



**Remove the bolt at the bottom of the rod, sit the rod in the rounded end of the bracket and screw in the bolt from the underside of the bracket.**



5. Now slide the hood frame onto the rods until the rods slide through all mounting brackets. Tighten the knobs to lock the frame in place.



6. Attach the tri-fold hood to the frame by using the metal fasteners on both the hood and the frame.



**Note: Once mounted the system should look like this**



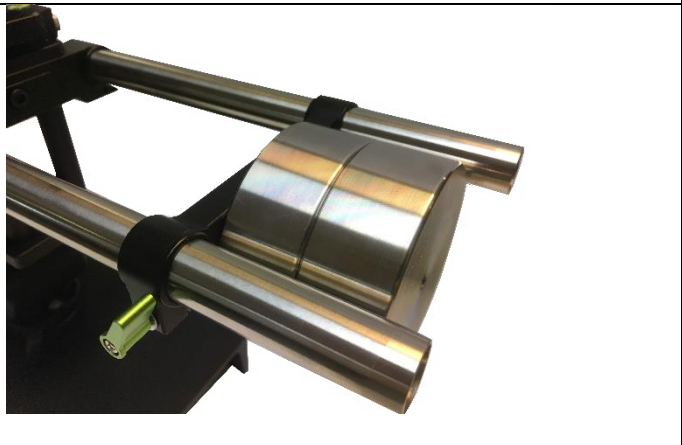
**7. Now slide the beamsplitter glass into the channel at the bottom of the hood frame with the Velcro strip at the top of the glass on top and facing toward you. Then push the glass toward the top of the hood and fold down the Velcro flap on the hood onto the Velcro on the beamsplitter glass.**



8. Release the camera plate from the top of the riser and attach to the bottom of either your camera, or camera plate and slide the camera back onto the riser with the camera lens facing the back of the hood. Slide the prompter system forward or backward on the silver rods so the camera lens can be inserted into the shroud on the hood.



9. If needed, you can use the counterbalance to help balance the system. Just slide the counterweight on the back end of the silver rods and secure by tightening the green tabs.



10. Your system should look similar to this when fully built.

